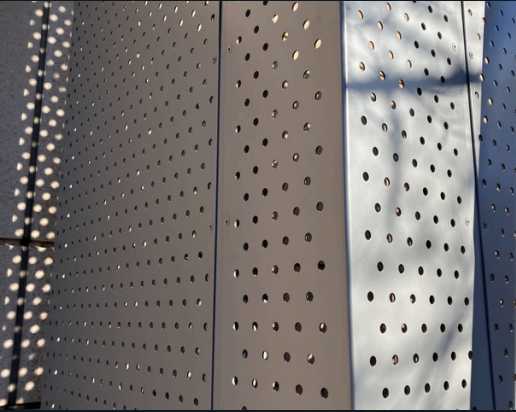


STELLARCRAFT PRIVACY SCREENS



STELLARCRAFT

PRIVACY SCREENS



StellarCraft Perforated Screens are perforated aluminum metal panels that create a unique aesthetic to garages and other building facades while allowing the required light and airflow. These cost-effective panels are lightweight, yet durable, and virtually maintenance free.

manufacturer's requirements

- Minimum Opening Size to be equal to or greater than material thickness
- Material between openings must be equal to or greater than material thickness
- Maximum Material Thickness not to exceed 0.314" (8mm). Maximum Material Width not to exceed 60"
- Maximum Material Length not to exceed 144"

product finishes

- Clear anodized finish
- High performing organic fluoropolymer finish
- See our Standard Options for more details

structural performance

- Wind load per IBC 2012, ASCE-7/10 40 PSF and 60 PSF
- Deflection of aluminum panels to be L/60 max. Deflection of panel framing members to be L/175 max
- Thermal Movements: Allow for thermal movements from ambient and surface temperature changes acting on exterior metal fabrications by preventing buckling, opening of joints, overstressing of components, failure of connections, and other detrimental effects

pattern library

- We have 12 standard tooling options
- Patterns are limitless with custom tooling
- Virtually any shape or pattern is possible taking your design from concept to reality
- See our Standard Options for more details

PRIVACY SCREENS



NOVA



Nova Privacy Screens are exterior screening solutions that create a visual barrier and conceal aesthetically unpleasing items from sight. The punched pattern is completely customizable to fit the need for wind protection, privacy and design. Our privacy screens (also known as equipment screens) are very low maintenance and designed to last.

PRIVACY SCREENS

NOVA

fabrication

- **Perforated Panels:** Aluminum plate - 5052, 0.188-in. thick
- **Aluminum Tube Supports:** ASTM B221, 6061-T6 alloy, extruded tubing, and 0.120-in. wall thickness
- **Aluminum Tube Support Caps:** ASTM B209, 5052 alloy; aluminum plate, 0.190-in. thick
- **Exposed Fasteners:** Flush countersunk screws or bolts, consistent with design of fence
- **Welding Electrodes:** Comply with AWS requirements in D1.1 and D1.2. Fasteners, Anchors & Inserts: 304 stainless



materials

- **Extrusion Alloy:** 6061-T6 Series
- **Perforated Panel Alloy:** 5052
- **Screws, bolts, washers, hardware** Stainless steel or other corrosion resistant material