



ASTRO METAL CRAFT

STELLAR  CRAFT™

763-777-8087
stellarcraftmetals.com



STARFLEET ALUMINUM RAIN SCREENS



Starfleet rain screens are ideal for parking structures where creativity can be explored. Custom designed aluminum perforations create a unique aesthetic to plain garages, while allowing the required light and airflow to go through.

CONTACT US

stellarcraftmetals.com

763-777-8087

sales@stellarcraftmetals.com



STANDARDS AND CODES

- International Building Code, 2012 ed.
- Minnesota State Building Code, 2015 ed.
- The Society for Protective Coatings
- The Aluminum Association, Inc.
- American Architectural Manufacturers Association
- American Society for Testing & Materials
- American Welding Society
- Americans with Disabilities Act Accessibility Guidelines

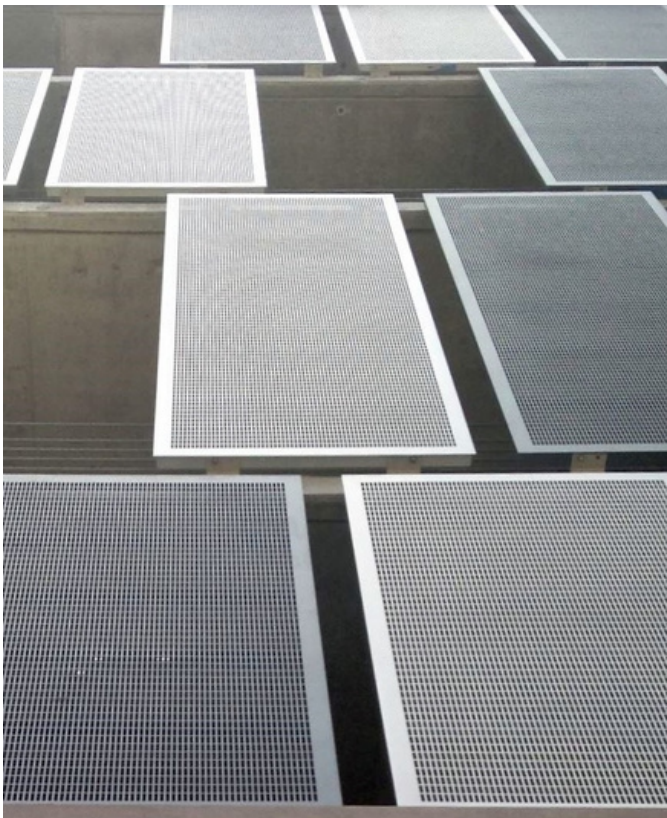
STRUCTURAL PERFORMANCE

Wind load per IBC 2012, ASCE-7/10 40 PSF & 60 PSF requirements.

Deflection of aluminum panels to be L/60 max.

Deflection of panel framing members to be L/175 max.

Allows for thermal movements from ambient and surface temperature changes acting on exterior metal fabrications by preventing buckling, opening of joints, overstressing of components, failure of connections, and other detrimental effects.



CONTACT US



PRODUCT DESCRIPTION

GENERAL

WORK INCLUDED:

Provide aluminum railing in lengths per approved engineering drawings.

- Prefabricated perforated aluminum fence
- Mounting components and accessories
- Mechanical fasteners

SUBMITTALS:

- Material description and installation instructions.
- Shop Drawings
- Samples for Initial Selection

QUALITY ASSURANCE:

- Comply with Standards and Codes listed in Article 1.02 REFERENCES.
- Welding Qualifications: Qualify procedures and personnel according to AWS D1.2/D1.2M, for aluminum.

WARRANTY:

See manufacturer's warranty for specific details

DELIVERY, STORAGE, AND HANDLING.

Deliver materials to the job site in good condition. Purchaser to store in clean, dry location properly protected against damage to finished surfaces. Store away from uncured concrete, masonry, or stucco.



PRODUCTS

MATERIALS:

- Aluminum Plate: ASTM B209, 5052-H32 Alloy
- Aluminum Angle Supports: ASTM B221, 6061-T6 Alloy
- Aluminum Component Fasteners: Type 300 Series Stainless Steel

FINISHES:

- Clear anodized finish
- High performing organic fluoropolymer finish

FRAME COMPONENTS:

SPECIFIER: Perforations, including distance between perforations (NOT less than the thickness of the aluminum plate). NOT more than 10 different sizes and shapes of perforations are allowed. MAXIMUM size of any perforation cannot exceed 2 1/2 in.

EXECUTION

PROJECT CONDITIONS:

- Verify locations of walls and other construction contiguous with metal fabrications by field measurements.
- Indicate field measurements on final shop drawings.
- Where field measurements cannot be made without delaying the Work, guarantee dimensions and proceed with fabrication of products without field measurements.
- Coordinate construction with other trades to ensure that actual dimensions correspond to guaranteed dimensions

INSTALLATION:

Install work in accordance with manufacturer's instructions





DESIGN OPTION EXAMPLES

OPTIONS

MANUFACTURING REQUIREMENTS:

- Minimum Opening Size to be equal to or greater than material thickness.
- Material between openings must be equal to or greater than material thickness.
- Maximum Material Thickness not to exceed 0.314" (8mm).
- Maximum Material Width not to exceed 60"
- Maximum Material Length not to exceed 144"

PATTERN LIBRARY:

- Patterns are limitless with custom tooling.
- Standard tooling options can be supplied upon request.
- Virtually any shape or pattern is possible taking your design from concept to reality.



MORE CUSTOM DESIGNS AVAILABLE UPON REQUEST