



ASTRO METAL CRAFT

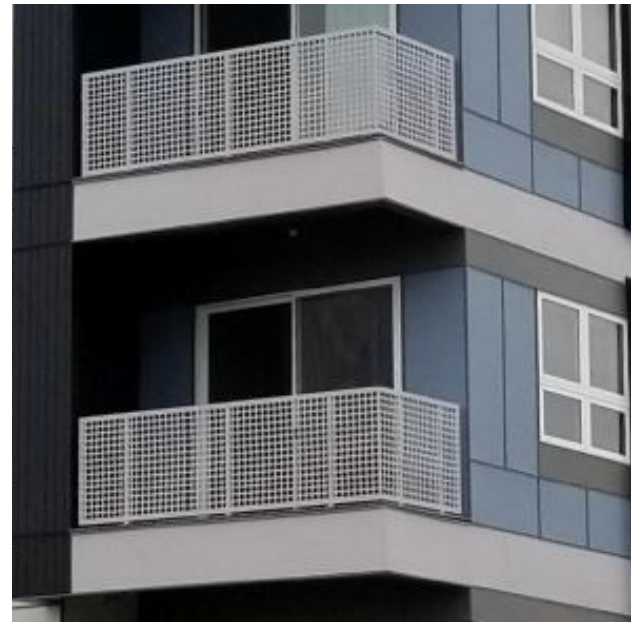
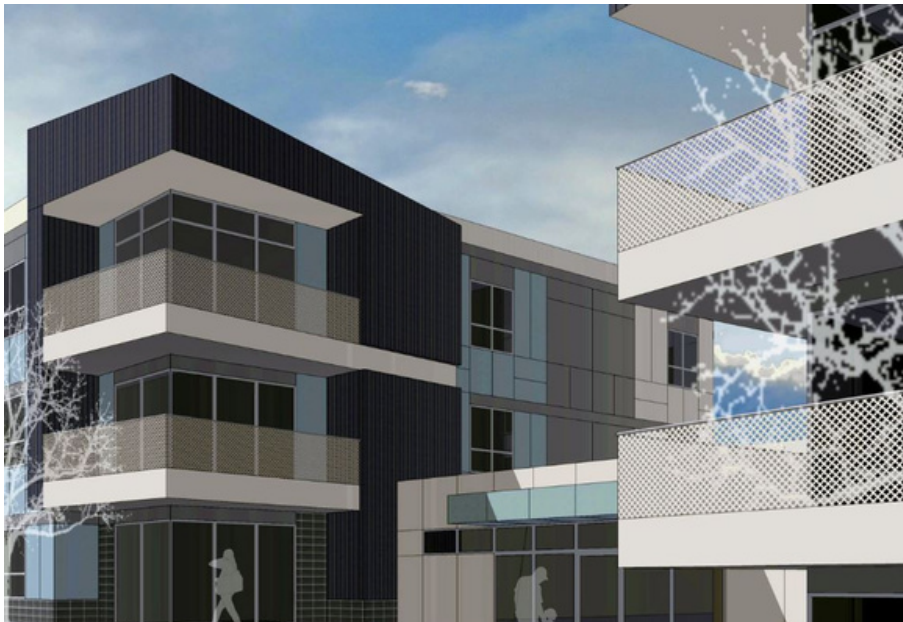
STELLAR CRAFT™

763-777-8087
stellarcraftmetals.com



GALAXY

PERFORATED GUARDRAILS



These perforated aluminum panels create a division of space for privacy, while still providing translucence. In addition to regulating ventilation, noise, shade, and visibility, perforated panels offer a modern aesthetic tone, perfect for balconies, decks, and other high places.

CONTACT US

stellarcraftmetals.com

763-777-8087

sales@stellarcraftmetals.com



STANDARDS AND CODES

- International Building Code, 2012 ed.
- Minnesota State Building Code, 2015 ed.
- The Society for Protective Coatings
- The Aluminum Association, Inc.
- American Architectural Manufacturers Association
- American Society for Testing & Materials
- American Welding Society
- Americans with Disabilities Act Accessibility Guidelines

STRUCTURAL PERFORMANCE

Horizontal concentrated load of 50 lbs. applied to 1 sq. ft. at any point in system, including panels, intermediate rails, balusters, or other elements composing infill area.

StellarCraft Galaxy Guardrails are used in all railing applications that must comply with IBC structural strength and dimensions



CONTACT US



PRODUCT DESCRIPTION

GENERAL

WORK INCLUDED:

Provide aluminum railing in lengths per approved engineering drawings.

- Prefabricated perforated aluminum fence
- Mounting components and accessories
- Mechanical fasteners

SUBMITTALS:

- Material description and installation instructions.
- Shop Drawings
- Samples for Initial Selection

QUALITY ASSURANCE:

- Comply with Standards and Codes listed in Article 1.02 REFERENCES.
- Welding Qualifications: Qualify procedures and personnel according to AWS D1.2/D1.2M, for aluminum.

WARRANTY:

See manufacturer's warranty for specific details

DELIVERY, STORAGE, AND HANDLING.

Deliver materials to the job site in good condition. Purchaser to store in clean, dry location properly protected against damage to finished surfaces. Store away from uncured concrete, masonry, or stucco.



PRODUCTS

MATERIALS:

- Extrusion Alloy: 6061-T6 Series
- Perforated Panel Alloy 5052
- Screws, bolts, washers, hardware shall be stainless Steel or other corrosion resistant material.

FINISHES:

- Clear anodized finish
- High performing organic fluoropolymer finish

FRAME COMPONENTS:

SPECIFIER: Perforations, including distance between perforations (NOT less than the thickness of the aluminum plate). NOT more than 10 different sizes and shapes of perforations are allowed. MAXIMUM size of any perforation cannot exceed 2 1/2 in.

- Aluminum Tube Posts: 6061-T6 alloy, 0.250-in. wall thickness.
- Aluminum Horizontals: ASTM B209, 5052 alloy; 0.125-in. thick.
- Exposed Fasteners: Button head screws or bolts, consistent with design of fence
- Welding Electrodes: Comply with AWS requirements in D1.1 and D1.2.
- Fasteners, Anchors & Inserts: 304 stainless

EXECUTION

PROJECT CONDITIONS:

- Verify locations of walls and other construction contiguous with metal fabrications by field measurements.
- Indicate field measurements on final shop drawings.
- Where field measurements cannot be made without delaying the Work, guarantee dimensions and proceed with fabrication of products without field measurements.
- Coordinate construction with other trades to ensure that actual dimensions correspond to guaranteed dimensions

INSTALLATION:

Install work in accordance with manufacturer's instructions



DESIGN OPTION EXAMPLES

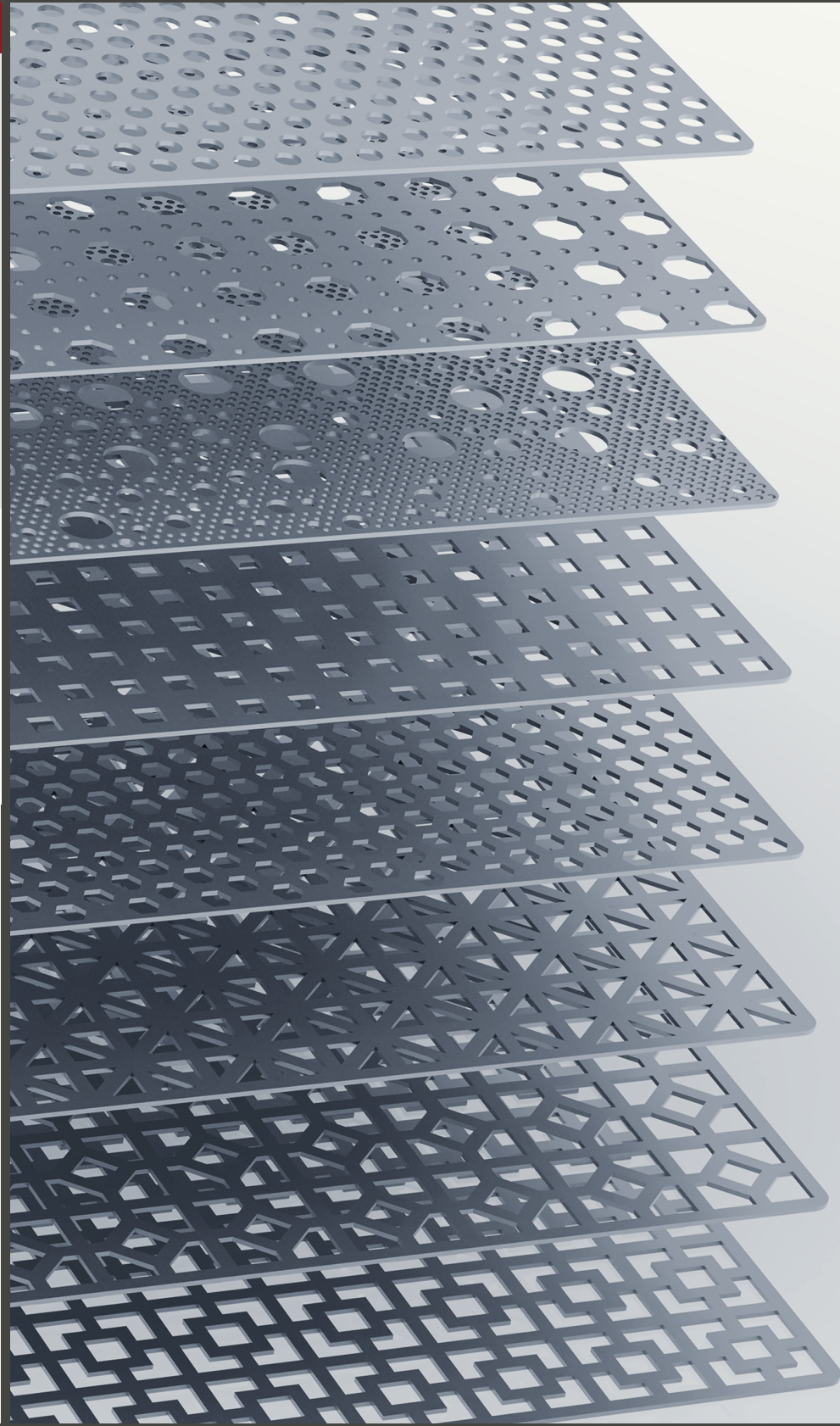
OPTIONS

MANUFACTURING REQUIREMENTS:

- Minimum Opening Size to be equal to or greater than material thickness.
- Material between openings must be equal to or greater than material thickness.
- Maximum Material Thickness not to exceed 0.314" (8mm).
- Maximum Material Width not to exceed 60"
- Maximum Material Length not to exceed 144"

PATTERN LIBRARY:

- Patterns are limitless with custom tooling.
- Standard tooling options can be supplied upon request.
- Virtually any shape or pattern is possible taking your design from concept to reality.



MORE CUSTOM DESIGNS AVAILABLE UPON REQUEST